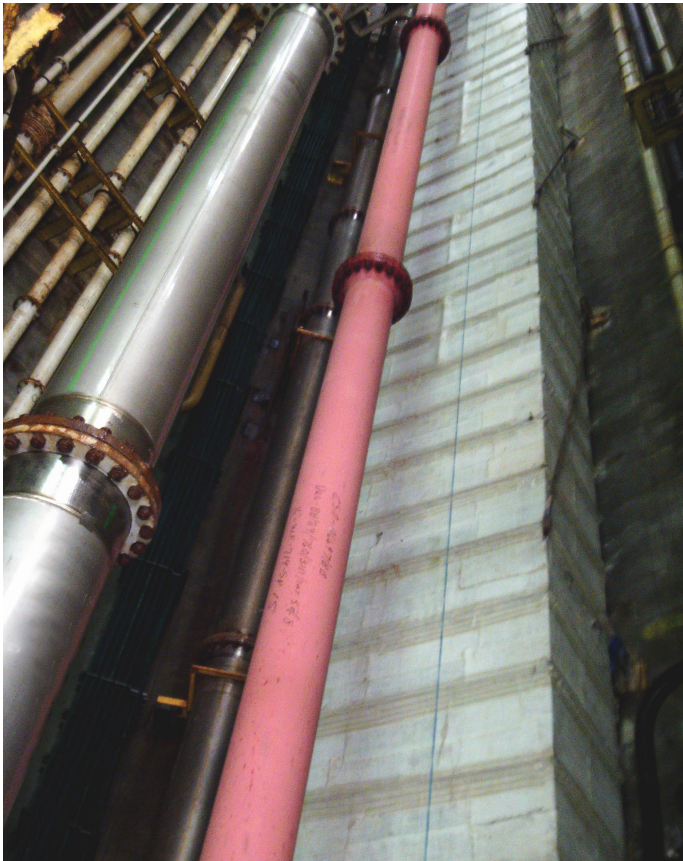


TECHNOWRAP™ E1



Technowrap™ E1 is an external corrosion protection coating developed for pipework and structures. E1 is a thicker laminate than our standard 2K, therefore each layer applied provides greater impact resistance while still adhering to the substrate and providing pressure containment.

Fibre	E-glass cross-ply (00/900) stitched cloth
Resin	Two-part epoxy resin system
Application	Complex geometries on pipework systems and pipelines. External corrosion protections and strengthening
Defect type	Wall loss through corrosion, internal or external
Max design pressure	Up to 20 bar
Max design temp	Up to 85°C
Approx cure time	24 to 36 hours

